

WHERE'S ANNUAL PLAN & CO RANGITĪKEI?



How Rangitīkei District Council plans to prioritise its time and resource in Year 2 of the Long Term Plan 2024-2034



KŌRERO MAI
We need to receive your feedback by 5pm on Monday, 5 May 2025

ACKNOWLEDGMENT

Mihi

E ngā mana, e ngā reo, e ngā rau
rangatira mā o te rohe nei o Rangitīkei,
tēnā koutou katoa.

Mihi mahana tēnei o te
Kaunihera o Rangitīkei kia tātou katoa e
noho ana ki roto i te rohe nei,
nau mai, whakatau mai rā

Whakataka te hau ki te uru,
Whakataka te hau ki te tonga,
Kia mākinakina ki uta,
Kia mātaratara ki tai,
E hī ake ana te atakura,
He tio, he huka, he hau hū,
Tīhei Mauriora!

The Rangitīkei District Council
acknowledges all those who live
within our District.

We send a warm welcome to you all.

Cease the winds from the west
Cease the winds from the south
Let the breeze blow over the land
Let the breeze blow over the ocean
Let the red-tipped dawn come with
a sharpened air
A touch of frost, a promise of a
glorious day!

WHERE'S ANNUAL PLAN & CO @ RANGITIKEI?

Kei whea rā te Māhere ā-tau i tēnei wā? Me hoki whakamuri, kia anga whakamua

Haere mai and welcome. This document gives you an update on what Rangitikei District Council has achieved so far in the 2024/25 financial year and sets out the key priorities for the upcoming 2025/26 financial year. It gives you an opportunity to have your say on:


ANNUAL PLAN 2025/26

- How Rangitikei District Council plans to **prioritise** its time and resources in the 2025/26 financial year.

& CO

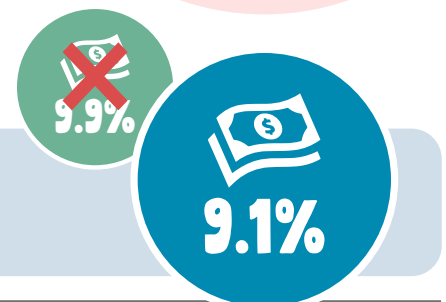
- **Where's Waste @?:** Every six years we are required to update and consult on our Waste Management and Minimisation Plan. We want to hear your thoughts on our proposed approach to Rangitikei waste management and minimisation – outlined on page 19.
- **Draft Dangerous, Affected and Insanitary Buildings Policy:** Every five years we are required to review and consult on our policy on dangerous, affected and insanitary buildings. We want to hear if you agree with how we identify and classify these buildings – outlined on page 20.
- **Fees & charges:** Every year we review our fees and charges to ensure they reflect the true cost of delivering these services. We want to hear if you agree with our proposed changes to some fees and charges – outlined on page 22.

Rangitikei District Council wants to hear feedback from everyone who call the Rangitikei home – all ages, ethnicities, and communities.



What is an Annual Plan?

The Annual Plan is part of the Long Term Plan family. It sets out a 12-month programme of budgeted work for Council and is produced in the years a Long Term Plan isn't produced. This Annual Plan relates to Year 2 of the 2024-34 Long Term Plan which we consulted with you on last year.



9.9%

9.1%

Our projected average rates increase for 2025/26 is:

In our Long Term Plan 2024-34 our projected rates increase for 2025/26 was 9.9%. **This has been reduced to 9.1%**

IT'S EASY TO MAKE A SUBMISSION

Anyone can make a submission on this Consultation Document by filling out the form online at: www.rangitikei.govt.nz/wheres-annualplan-andco

Submission forms are available from:

- **Marlon Head Office**
- **Marlon Community Hub**
- **Bulls Community Hub**
- **Taihape Community Hub**

Freepost to:

Rangitikei District Council - 172050
Private Bag 1102, Marlon, 4741

Email: submissions@rangitikei.govt.nz



When you spot a QR code in this document, just open your camera and hold it over the QR code, a link will pop up, click on it and it will take you to supporting information on our website.



MAYOR'S MESSAGE

Nā te Koromatua

Tēnā koe,

Local Government continues to face considerable head winds in the pursuit of progress.

The sheer speed and volume of legislative and regulatory change is putting immense pressure on councils, councillors, and staff. I am mindful that in some areas it might look like we are not making much progress, or that progress has stalled. I assure you; this is not the case.

We are currently in a period of considerable infrastructure development for Rangitikei, with a number of high-value capital projects in progress. We will have to make some careful decisions about how these projects are prioritised and balanced alongside the Government's 'back to basics' direction, and legislative change.

Local Water Done Well, Regional Deals, and changes to the Resource Management Act are just a few of the Government directives threatening to take focus away from the local priorities of Rangitikei.

This document provides you with a comprehensive update on what we have achieved so far this year, and what we are planning to deliver in the next financial year. Despite the challenges, there are many examples of significant achievement and projects we have completed - or are very, very close to completing. I continue to be amazed and incredibly proud of the work we do and the spirit of the Rangitikei community.

As we work through the next stages of Local Water Done Well and the potential move of our three waters assets and infrastructure to a new entity, we continue to face increasing costs for our major capital projects. As a result, future budgets and planned projects may need to be reconsidered or reprioritised. Making sure the services we provide are the most cost effective and affordable for Rangitikei residents is top of mind for myself and Council.

Keeping you up to date as we progress through the 2025/26 financial year is also a key focus for Council.

If things change, we will consult with you.

There are some important decisions we will need to make; what we do with the Marton Pool, how we progress with kerbside recycling in light of Government changes made late last year, and what next for the Marton-Bulls Wastewater project are just a few. We look forward to hearing your views on these topics when the time comes.

Engaging with Council's work - what we do, and why and how we do it - is more important now than ever. Rangitikei can either be resistant to the change on our horizon and risk slowing progress, or we can welcome it as an opportunity to fuel innovative solutions to how we best move forward.

I and Councillors welcome your voice and fresh perspective. It is listened to and always considered at the decision-making table.



A handwritten signature in black ink, which appears to read 'Andy Watson'.

Ngā mihi, Andy Watson, Mayor of Rangitikei.

HOW DOES RANGITĪKEI DISTRICT COUNCIL DECIDE ITS PRIORITIES AND PROGRAMME OF WORK FOR THE YEAR?

E pēhea te whakatauria ngā whakaarotau me te whakahōtakaria ngā mahi-ā-tau e te Kaunihera a Rohe o Rangitīkei?

District and city councils across Aotearoa New Zealand set their project priorities and work programmes by delivering Long Term Plans.

WHAT IS A LONG TERM PLAN?

Each council prepares a Long Term Plan (LTP) which outlines planned work for the next 10 years. This document is reviewed and updated every three years. The LTP outlines major projects, infrastructure investment, levels of service, financial planning and budgeting.

Public consultation on every LTP is required by law and gives residents the opportunity to offer their perspective before the LTP is adopted and work set in motion for the next 10 years – we consulted on our current Long Term Plan 'Long Term Plan 2024-2034' in 2024.

Decisions around what to include and what not to include in a Long Term Plan are made by balancing statutory requirements, strategic planning, public consultation (like this one!), and available funding.

Council produces an Annual Plan for Years 2 and 3 of each Long Term Plan.

KŌRERO MAI

We need to receive your feedback by 5pm on Monday, 5 May 2025

WHAT IS AN ANNUAL PLAN?

The Annual Plan details Council spending and project priorities for the upcoming financial year.

Councils are not required to consult with the public on their Annual Plan unless there is a significant or material change from the LTP.

While there are no significant or material differences from our Long Term Plan in the Annual Plan 2025/26, Rangitīkei District Council feels it is important to provide a comprehensive update on key projects, and give Rangitīkei residents a formal opportunity to provide feedback!



A note on central government direction and the current local government legislative environment

Although much of the balancing of priorities happens when councils set and develop their Long Term Plans, external factors continue to impact and influence Council's ability to achieve what was planned in any given financial year.

This is particularly true at the moment. Councils across Aotearoa New Zealand are currently working in an environment of considerable change. The Government has set clear expectations and indicated future changes to our legislative environment, which may put pressure on our agreed programme of work.

We have prepared this document based on what we currently know, and what is currently planned. Throughout this document, we have indicated where legislative change or direction from The Government could shift Council priorities in the short to medium term – based on our current understanding.



HOW DO WE FUND THE SERVICES WE OFFER AND THE PROJECTS WE DELIVER TO RANGITIKEI RESIDENTS?

E pēhea te whakatahuā ngā ratonga me ngā kaupapa mahi e tukuna ana e mātou ki ngā kainoho o Rangitīkei?

To organise how we spend our money, we often use the terms 'capital expenditure' (capex) and 'operations expenditure' (opex).

Capital expenditure (capex) is the money we spend on developing, upgrading, and maintaining physical assets – for example, what we are using to complete Marton Water Strategy and the Taihape Town Hall refurbishment.

Capex is generally funded by debt*, grants, subsidies and/or rates.

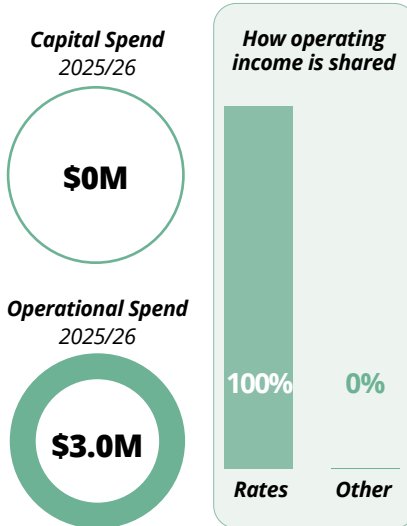
Operational expenditure (opex) is money used to fund the running, monitoring, and regulating of the services we offer to Rangitīkei residents – this is for things like maintaining our parks and reserves, ensuring public toilets are clean and tidy, and delivering the operational side of local government (report writing, order papers, meeting minutes).



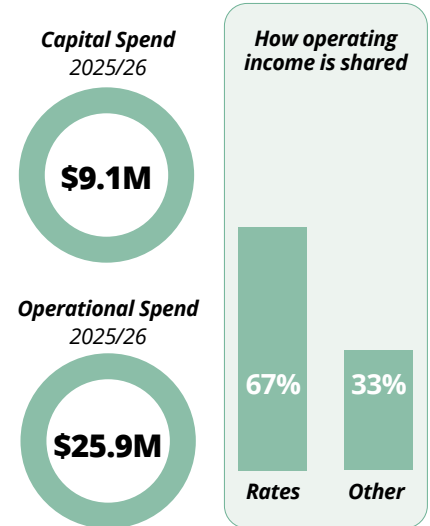
To provide some perspective on how funds are allocated for our key workstreams, we have included a breakdown of projected capex and opex spend for the 2025/26 financial year, and how operating income is shared under each workstream (i.e. what income we receive from rates vs income received from other areas such as fees, charges, grants, government funding and debt).



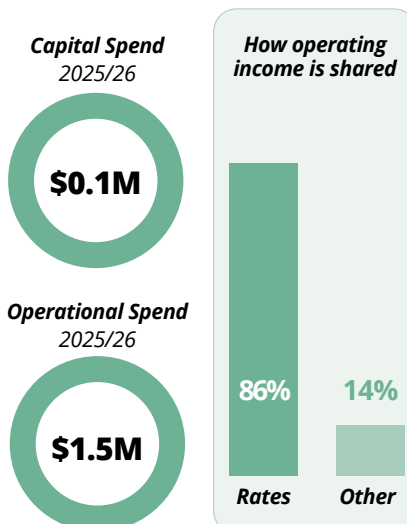
Community Leadership



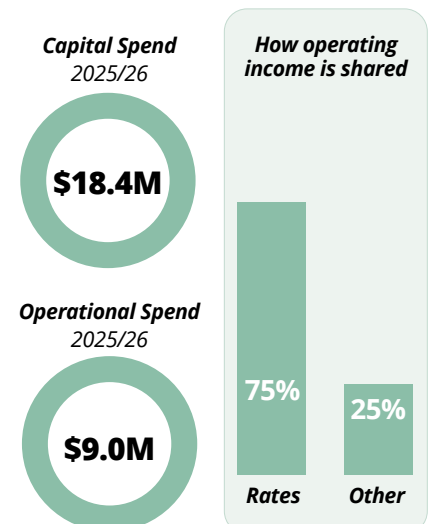
Roading & Footpaths

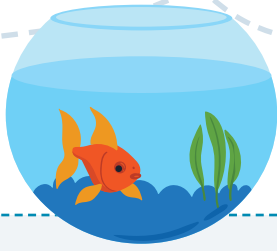


Parks and Reserves



Community Wellbeing & Assets





*What is Debt funding?



One way councils can afford to pay for big improvements to infrastructure is borrowing money. Currently, Rangitikei District Council is able to borrow 1.75 times our revenue. Council revenue is determined by the amount of money we receive from rates, fees and charges. By funding through debt we are ensuring future generations also contribute to the cost of the asset.

THREE WATERS

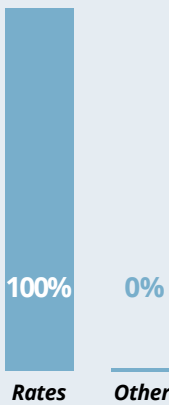


Water Supply

Capital Spend
2025/26



How operating income is shared

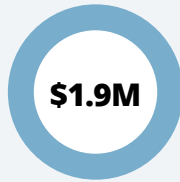


Operational Spend
2025/26

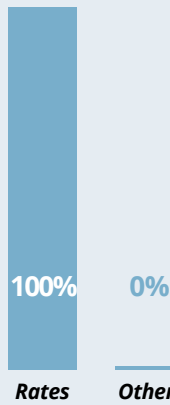


Wastewater

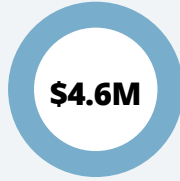
Capital Spend
2025/26



How operating income is shared



Operational Spend
2025/26

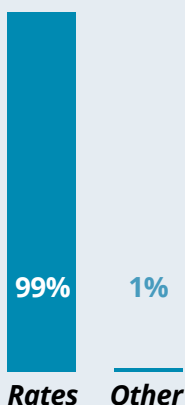


Stormwater

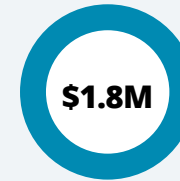
Capital Spend
2025/26



How operating income is shared



Operational Spend
2025/26

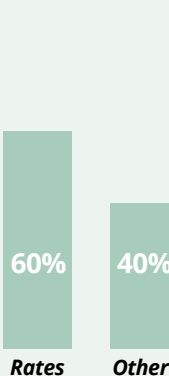


Rubbish & Recycling

Capital Spend
2025/26



How operating income is shared



Operational Spend
2025/26

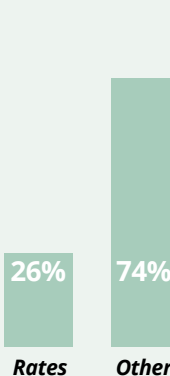


Regulatory Services

Capital Spend
2025/26



How operating income is shared



Operational Spend
2025/26



The following pages of this document break down what council has achieved in the last eight months (Year 1 of the Long-Term Plan 2024-34) in relation to each of these functional workstreams, and what it plans to achieve in this coming financial year (Year 2 of the Long-Term Plan 2024-34).




THREE WATERS: DRINKING WATER, WASTEWATER, STORMWATER

Rangitikei District Council is responsible for the delivery and management of water services (drinking water, wastewater, and stormwater) for the Rangitikei District.

There's a lot happening with water at the moment – from legislation and policy changes (Local Water Done Well) to a number of key projects on-the-go to improve water services in Rangitikei. Despite proposed changes to the future delivery of water services under Local Water Done Well, Rangitikei District Council is continuing with our programme of work to improve water infrastructure for our residents.

NOTABLE ACHIEVEMENTS AND WORK IN PROGRESS

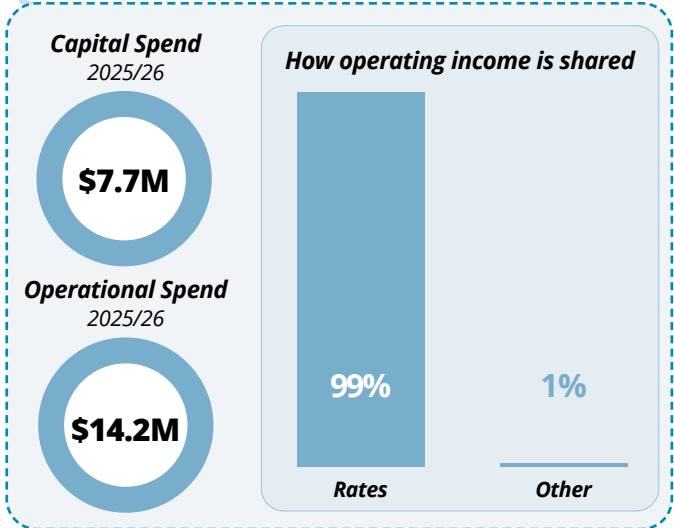
(The below includes notable progress to date - 1st July 2024 - 1st March 2025, and next steps).

PROJECT	PROJECT TIMELINE	NOTABLE UPDATES	NEXT STEPS
 <p>MARTON WATER STRATEGY</p>	2019 - 2025	<ul style="list-style-type: none"> We are reaching the end of this extensive piece of work to improve the taste and smell of Marton drinking water. We have recently completed testing of a trial treatment plant which simulated how treatment of water from the new bore water source will function. 	<ul style="list-style-type: none"> Shortly, we will be moving this trial treatment plant to the Tutaenui Reservoir Bore site to begin further testing. We anticipate that testing of the water from this bore will take 8-12 weeks.
 <p>MARTON - BULLS WASTEWATER CENTRALISATION</p>	2020 - 2028	<ul style="list-style-type: none"> Council staff have investigated a wide range of options to replace and upgrade the current systems and have developed a shortlist of preferred options. 	<ul style="list-style-type: none"> A recommended option will be put forward to Council in the coming months. We expect to consult with you on the next steps for this project in mid-2025.
 <p>LAKE WAIPU IMPROVEMENT AND RĀTANA PĀ WASTEWATER TREATMENT PROJECT</p>	2018 - Ongoing	<ul style="list-style-type: none"> This project is a collaborative effort involving Rangitikei District Council, local iwi, Horizons Regional Council, and the community of Rātana. It is partially funded by Ministry for the Environment. The project's intention is to improve the water quality of Lake Waipu by implementing a process that discharges wastewater to land. The resource consent for this work has been lodged. 	<ul style="list-style-type: none"> This project is on hold while we await approval of the resource consents. While development is on hold, the team continues to work on designing the large dam that will store treated wastewater at this site in future.

A note on proposed changes to the wastewater statutory environment

Taumata Arowai (the national water regulator) is currently consulting on their proposal to develop a set of national wastewater standards to address inconsistencies and inefficiencies in Aotearoa New Zealand's wastewater management. If implemented in their entirety, these regulatory changes could have a direct impact on many of the wastewater projects currently in progress in Rangitikei - for example, standardisation around how and whether wastewater can be discharged to land and water. We will keep you updated as this proposal moves through Parliament.





PROJECT	PROJECT TIMELINE	NOTABLE UPDATES	NEXT STEPS
---------	------------------	-----------------	------------



UPGRADES TO RANGITĪKEI STORMWATER INFRASTRUCTURE

Ongoing

- We are working through an extensive programme of work to upgrade stormwater infrastructure across the district – specifically, High Street in Bulls, Hunterville, and the Bulls Domain.



RANGITĪKEI WASTEWATER CONSENTS

Ongoing

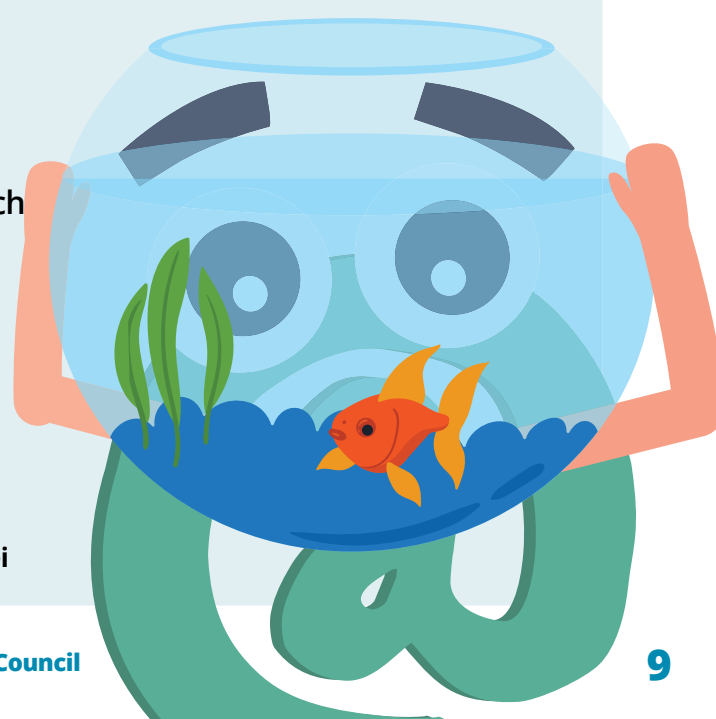
- We are working through the consenting of the Marton, Bulls, Taihape, Hunterville, Mangaweka and Ratana Wastewater Treatment Plants.

WHAT'S NEXT FOR LOCAL WATER DONE WELL?

Following a decision on how Rangitīkei water services will be delivered in future - expected 22 May 2025, staff will finalise the Rangitīkei District Council Water Services Delivery Plan which is due to Government by September 2025.

If the plan is accepted, work will begin on implementing the new water services delivery model. Local Water Done Well implementation is expected to continue over a number of years. This means, Council will continue to implement water upgrade projects outlined in our Annual Plan in the short-medium term.

For more information on Local Water Done Well www.rangitikei.govt.nz/services/wheres-water-rangitikei



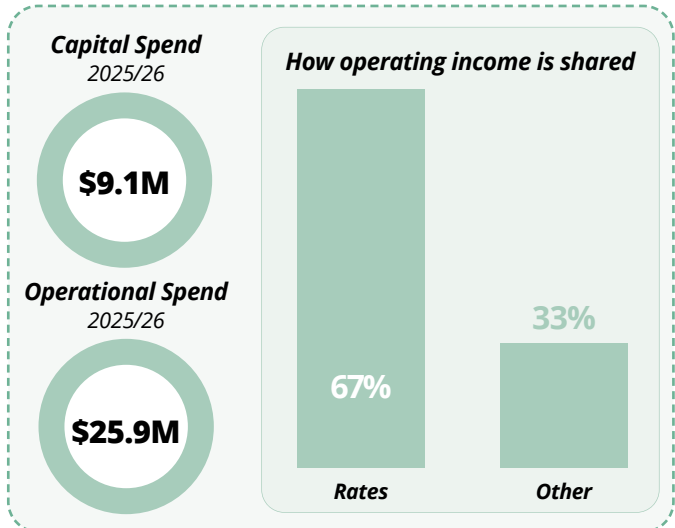
ROADING & FOOTPATHS

Roading is a fundamental service at Rangitikei District Council.

Most of the roading team's programme of work is co-funded by the New Zealand Transport Agency – Waka Kotahi. As such, significant progress is often dependent on securing this funding.

The business-as-usual maintenance and improvement carried out by our roading team includes:

- Routine maintenance: Pothole repairs, resealing, resurfacing, road marking.
- Seasonal work: Addressing storm damage, de-icing in winter.
- Bridge and footpath maintenance.
- Traffic and safety management: Upgrading streetlights and installing pedestrian crossings.
- Management of unsealed, gravel and rural roads.



NOTABLE ACHIEVEMENTS AND WORK IN PROGRESS

(The below includes notable progress to date - 1st July 2024 - 1st March 2025, and next steps).

- **Calico Line footpath** – Planned completion 2025/26 financial year: Council agreed to proceed with this project in December 2024. It will see the development of a shared pathway from Nga Tawa Road to Marton so students can get to and from Nga Tawa School more safely. Our roading team will shortly engage with landowners before beginning construction.
- **New roading contract beginning 1 July 2025.** Rangitikei District Council has awarded Downer New Zealand Limited with its Roothing Maintenance Services contract for the next three years.



Pressure on Rangitikei roads following Mill closure

2024 saw the closure of the Winstone Pulp Mill. This was significant for Northern Rangitikei communities and saw a number of jobs lost

throughout our district. Following the closure, Rangitikei saw a substantial increase of logging trucks on our roads, carrying

recently felled trees to the Hawkes Bay for processing. This quickly resulted in the deterioration of some of our major roads, especially Rangitikei State Highways which are managed by the New Zealand Transport Agency – Waka Kotahi.

“We were concerned about having additional logging trucks on the roads impacting wear and tear.” Rangitikei District Council Mayor, Andy Watson said. In January 2025, Rangitikei District Council partnered with Ernslaw One, KiwiRail, Napier Port, McCarthy Transport and Qube Ports to revive a logging train from Palmerston North to Hawke’s Bay. This train, running 5 days a week, has been revived to specifically

help the deterioration of the Napier-Taihape Road. While a huge win for the Rangitikei District, the deterioration from heavy vehicles remains an ongoing concern. In his February 2025 Rangitikei District Council report, Mayor Andy said; “The rail train is a huge step forward; however, forestry will need to continue to use Rangitikei roads to transport wood throughout the country. We need to continue with this progress to ensure the sustainability of our roading network.”

PARKS AND RESERVES

Our Parks and Reserves team are another fundamental service at Rangitikei District Council.

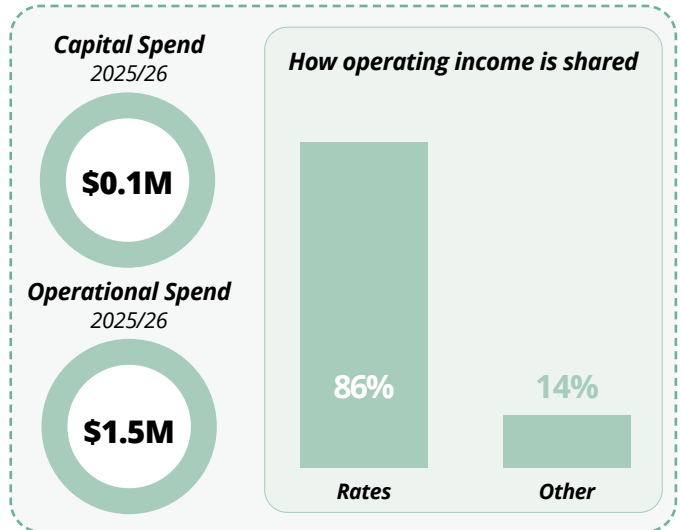
This team works across the district ensuring our parks, reserves, and cemeteries are clean, tidy, and accessible for residents and visitors to Rangitikei.

Alongside the business-as-usual parks and reserves maintenance schedule, there are some exciting improvement projects on the horizon.

NOTABLE ACHIEVEMENTS AND WORK IN PROGRESS

(The below includes notable progress to date - 1st July 2024 - 1st March 2025, and next steps).

- Hautapu River Parks officially opened - December 2024:** This project was a collaborative effort between the Friends of Taihape Charitable Society, Ngāti Tamakōpiri, the Rangitikei Environment Group, and Rangitikei District Council. It saw the restoration of the area between Papakai and Taihape Memorial parks, and improved the accessibility of this open space for the Taihape community and visitors to the area.
- Flying Fox at Wilson Park:** March 2025 saw the opening of a new flying fox at Sir James Wilson Park in Marton. This project was completed in collaboration with Marton Development Group.
- Bulls Open Spaces Master Plan:** Work has begun on a Bulls Open Spaces Master Plan* that will provide a blueprint for the development and useability of open spaces in Bulls. Keep an eye out for community engagement on this project in the coming months.
- Installation of cremation walls:** To conserve cemetery land availability, we are planning to install cremation walls at our main cemeteries. These walls will contain a series of small compartments where urns of ashes can be placed and marked with a memorial plaque – similar to a gravestone.



Cutting the ribbon to open the Otūpae Station Swingbridge - Te Pou o Otūpae. From left to right; Kuia Byford and Cr Piki Te Ora Hiroa;

*What is a Master Plan?

A Master Plan has different definitions depending on the context. In this instance, a Master Plan is a strategic document that outlines the vision, objectives, and ways to manage the use of a town's open spaces (i.e. its parks and reserves). It is a tool used by council to ensure the space is functional for all uses, and that any future developments (i.e. cosmetic improvements such as a new netball court or sitting area) are efficient and sustainable.



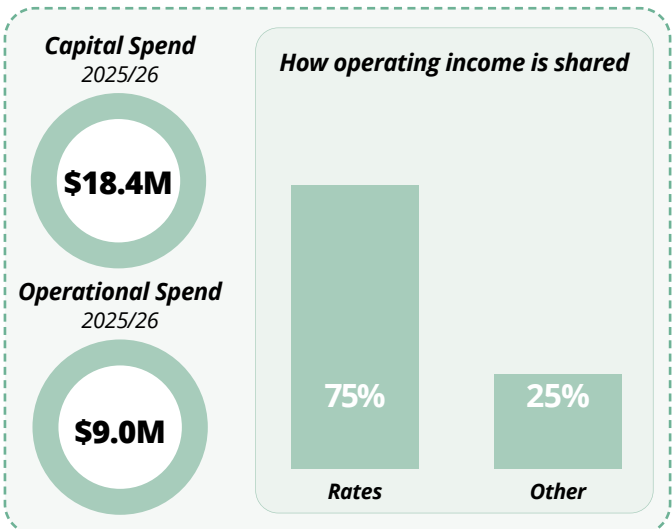


Storytime at Marton Community Hub.

COMMUNITY WELLBEING AND ASSETS

The Community function at Rangitikei District Council is centered around projects and services that support, engage, and develop our diverse communities.

These are our wonderful front-facing staff who deliver Council's key facilities and services for community use (i.e. community hubs, community spaces, youth groups and initiatives, emergency management and destination promotion).



NOTABLE ACHIEVEMENTS AND WORK IN PROGRESS

(The below includes notable progress to date - 1st July 2024 - 1st March 2025, and next steps).

- Implementation of the **Rangitikei Destination Management Plan**.
 - **Key implementation actions achieved:**
 - Visit Rangitikei cycle trails, golf clubs and visitors guide maps created and available at our Community Hubs.
 - Golf promotion: A '5 days of fairways event' is launching October 2025.
 - Discover Rangitikei photography exhibition event.
 - New 'Welcome to the district' entrance signs to be installed.
- **Funding support**

Every year we award funding to organisations, events, and individuals who apply to our three Rangitikei District Council funds and schemes.

 - From 1 July - 31 December 2024 we awarded a total of \$40,492 of funding to local community events and initiatives.
 - We also **support a number of annual events** that put Rangitikei towns on the regional map.

Community Hubs

 - **Uniform Alteration Service:** In partnership with the Marton Uniform Exchange, a uniform alteration service has been started in Marton. Following its success, the team are investigating avenues to offer this service to other Rangitikei communities.
 - **New Hunterville Community Library:** An awesome community effort, the Hunterville Community Library was opened by Rangitikei Mayor, Andy Watson in January 2025.
 - **Marton Youth Headquarters (#YHQ):** #YHQ was established to serve Marton school students. It operates out of the Marton Community Hub and is celebrating its one year anniversary in April 2025.



KŌRERO MAI

We need to receive your feedback by 5pm on Monday, 5 May 2025

SUBMISSION FORM

Have your say on 'Where's Annual Plan & Co @ Rangitīkei?'

Kei whea rā te Māhere ā-tau i tēnei wā? Me hoki whakamuri, kia anga whakamua. Tēnā, tukuna mai tō kōrero.

Submissions close at 5pm, Monday 5 May 2025



IT'S EASY TO MAKE A SUBMISSION

Anyone can make a submission on this Consultation Document by filling out the form online at www.rangitikei.govt.nz/wheres-annualplan-andco or by completing this submission form.

Submission forms can be delivered to:

- **Marton Head Office**
46 High Street, Marton, 4710
- **Marton Community Hub**
31 High Street, Marton, 4710
- **Bulls Community Hub**
Te Matapihi, 4 Criterion Street, Bulls, 4818
- **Taihape Community Hub**
102 Hautapu Street (SH1), Taihape, 4720

Mailed freepost to:

Rangitikei District Council - 172050
Private Bag 1102, Marton, 4741

Emailed to:

submissions@rangitikei.govt.nz

YOUR DETAILS

Name/Ingoa: _____

Is your feedback on behalf of an organisation? Yes No
(If yes, this confirms you have the authority to submit on the organisation's behalf)

Organisation/ Tōpūtanga (if applicable): _____

Address/Kāinga noho: _____

Email/ Īmēra: _____

Phone/Waea: _____

- Please tick this box if you would like to speak to your submission at the Council Hearings on 15 May 2025. Someone will contact you to confirm this.

Please note:

Submissions for Where's Annual Plan & Co @ Rangitīkei? are public information and your name, organisation and submission will be made available to the public as part of deliberations. Your contact details will remain private.

Your submission will only be used for the purpose of the Where's Annual Plan & Co @ Rangitīkei? process and will be held by Rangitīkei District Council at 46 High St, Marton 4710. You may access the information and request its correction, if required.

How did you hear about this consultation?

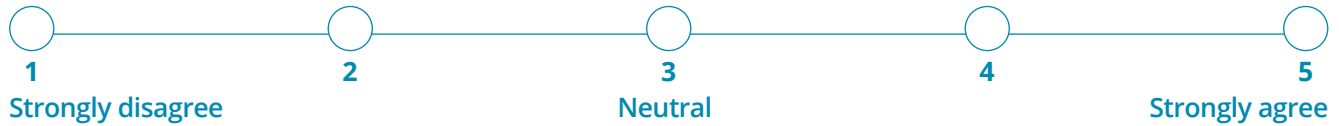
- Newspaper Website Facebook Other
 Mail Meeting Poster/Flyer _____

Please indicate your preference for each topic on the scales below:

KEY TOPIC 1 - DRAFT WASTE MANAGEMENT AND MINIMISATION PLAN.

Do you agree with our vision for waste management and minimisation in the Rangitikei?*

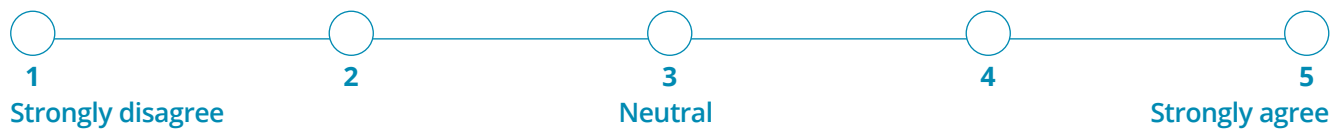
"To maintain a healthy and protected environment for Rangitikei by reducing our impact on the environment"



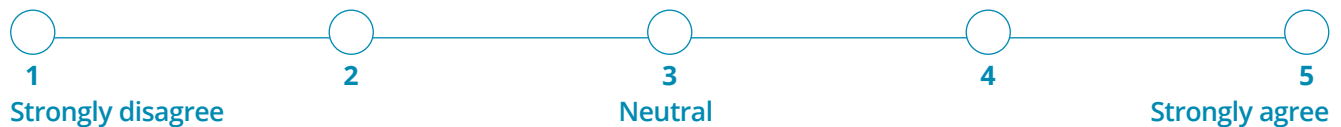
Comment: _____

Do you agree with our 2030 targets for reducing waste?*

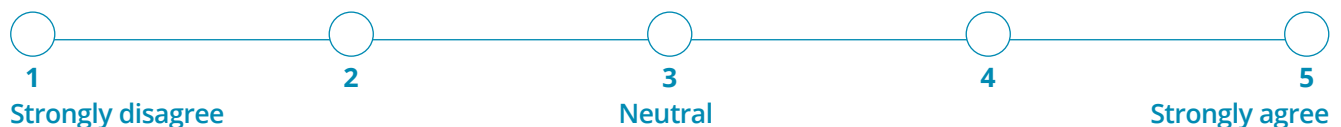
Reduce the amount of material entering the waste management system by 10% per person



Reduce the amount of material that needs final disposal by 30% per person



Reduce the biogenic methane emissions from waste by at least 30%



Comment: _____

KEY TOPIC 2 - DRAFT DANGEROUS, AFFECTED AND INSANITARY BUILDINGS POLICY

Do you support the Draft Dangerous, Affected and Insanitary Buildings Policy?*

Comment: _____

KEY TOPIC 3 - PROPOSED SCHEDULE OF FEES & CHARGES

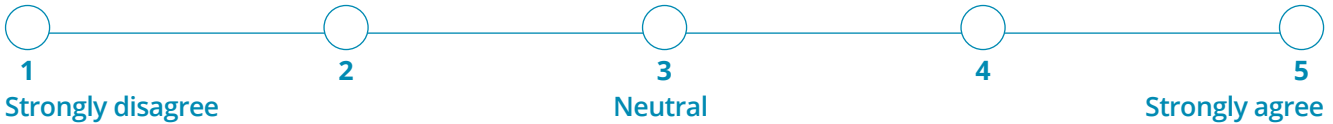
Are there any fees/charges you think should be changed?*

i.e. Do you think there are fees/charges that should be increased or decreased?

Comment: _____

KEY TOPIC 4 - YOUR VIEW ON OUR PLANNED PROGRAMME OF WORK FOR ANNUAL PLAN 2025/26

Do you think Rangitikei District Council's programme of work proposed in the Annual Plan 2025/26 reflects the needs and priorities of the community?*



Why, Why not? _____

Which projects or services would you like to hear more about?*

(please tick all that apply)

- | | |
|---|--|
| <input type="checkbox"/> Community Leadership | <input type="checkbox"/> Parks and Reserves |
| <input type="checkbox"/> Roothing | <input type="checkbox"/> Community |
| <input type="checkbox"/> Water Supply | <input type="checkbox"/> Rubbish and Recycling |
| <input type="checkbox"/> Wastewater and Sewage Disposal | <input type="checkbox"/> Regulatory Services |
| <input type="checkbox"/> Stormwater Drainage | <input type="checkbox"/> Other |

Comment: _____

ANYTHING ELSE?

Comment: _____







Rangitikei District Council
Annual Plan & Co Submissions
Att: Planning and Democracy
Private Bag 1102
Marton 4741





AN UPDATE ON THE IMPROVEMENT OF COMMUNITY FACILITIES

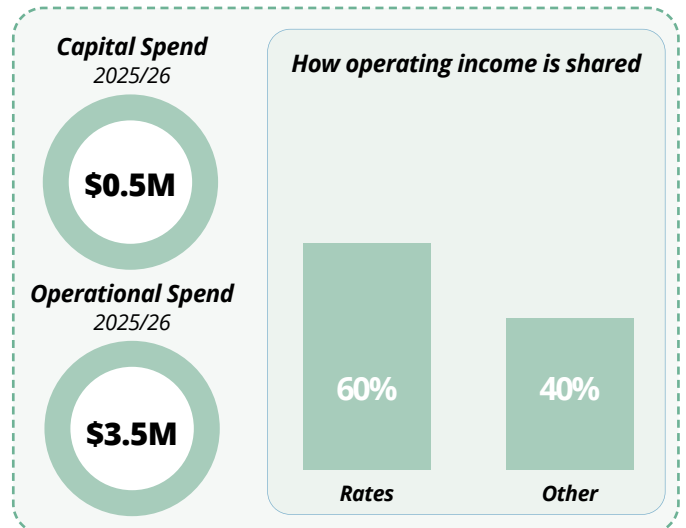
FACILITIES	PROJECT TIMELINE	NOTABLE UPDATES	NEXT STEPS
 <p>MARTON SWIM CENTRE RENOVATION</p>	<p>September 2024 - Ongoing</p>	<ul style="list-style-type: none"> We have recently received a comprehensive condition assessment of the Marton pool facility as it stands. The assessment included all the buildings, the pool, pipework and all associated filter and heating equipment. In March 2025, Council received a report detailing four repair options. These options ranged from short-medium-long term solutions with costs ranging from \$1 million to \$12 million. 	<ul style="list-style-type: none"> A public Council workshop is scheduled for 10 April 2025 where our contracted engineers will go over each of the four repair options in more detail. Reopening the Marton Pool is a priority. We will keep you updated as the path to reopening is developed.
 <p>TAIHAPE TOWN HALL AND COMMUNITY HUB REDEVELOPMENT *</p>	<p>The building has been closed to the public since 2021. Expected completion - 2027</p>	<ul style="list-style-type: none"> At its July 2024 Council meeting Rangitikei District Council voted to appoint Maycroft Construction Ltd to complete this redevelopment project. On 27 March 2025 Council agreed to progress preliminary designs, based on retaining the front façade of the building. With the front façade retained, the rest of the building will be demolished and replaced with a new hall and stage area. 	<ul style="list-style-type: none"> Staff will now work with Maycroft Construction Ltd to progress the designs. It is important to note, the redeveloped Taihape Town Hall and Community Hub will have the same features of the historical building that the community has treasured for generations (including the hall, stage, supper room and toilets).
 <p>MARTON COMMUNITY HUB, EMERGENCY OPERATIONS CENTRE, AND OFFICES</p>	<p>2025/26 - Ongoing</p>	<ul style="list-style-type: none"> At the February 2025 Council meeting, Rangitikei District Council agreed to proceed in principle to begin designing the Emergency Operations Centre as a first phase of this project. A tender process was recently completed and a preferred tenderer chosen for the Marton Community Hub and offices. Staff will now work with the preferred tenderer to secure a contract for the initial stages of the project. 	<ul style="list-style-type: none"> It is likely the Emergency Operations Centre will be designed ahead of the head office and Marton Community Hub. This is to ensure Rangitikei is equipped and prepared to respond in an emergency environment.
 <p>TAIHAPE GRANDSTAND</p>	<p>2021- Ongoing</p>	<ul style="list-style-type: none"> In September 2024, Council received a report outlining how much it will cost to strengthen the grandstand while retaining its integrity as a heritage building. The current projected cost of full repair is estimated to be beyond the budgeted amount of \$1M. 	<ul style="list-style-type: none"> Council have requested that the community identify their requirements for the ground floor of the grandstand, including engaging required specialists to design these requirements and fundraising for any work that falls outside Council's remaining budget for the project. Staff are currently working through this process with the users.

* The historic Taihape Town Hall and adjacent Community Hub is currently closed due to risk of collapse in an earthquake.

RUBBISH AND RECYCLING

The Rangitikei District Council rubbish and recycling function focuses on sustainable waste management practices to protect public health and the environment.

We own six transfer stations across the district where residents can dispose of general waste and recycle.



NOTABLE ACHIEVEMENTS AND WORK IN PROGRESS

(The below includes notable progress to date - 1st July 2024 - 1st March 2025, and next steps).

- In 2024, we worked with partners to complete a **'Kerbside collection and recycling of food waste'** feasibility study. The purpose of this study was to determine the most effective and efficient processes to deliver a council-operated kerbside recycling service to residents. You can read the full feasibility study as part of the supplementary material of this document: www.rangitikei.govt.nz/wheres-annualplan-andco
- Weigh bridges:** New weigh bridges installed at our Waste Transfer Stations in Taihape and Bulls, there are now three across the district.
- Battery Heaven:** In the first year of this scheme, more than 500kgs of batteries have been collected, and recycled through our partners, E-Cycle.

What is battery heaven?

The Rangitikei District Council Battery Heaven scheme allows residents to drop off old batteries at all Community Hubs and Transfer Stations free of charge. Its purpose is to remove dead batteries from the waste cycle and reduce the safety and environmental hazards that they pose.



Government update on Kerbside recycling requirements – December 2024

The Government has announced it will no longer require household recycling and foodscraps services to be provided to all urban areas from 2027 and 2030 respectively.

In 2024, Rangitikei District Council made its decision to proceed with kerbside recycling and foodscraps services based on the 2027/2030 timeframes. We consulted with you on how you wanted us to implement this last year and made the decision not to implement general waste kerbside collection as part of the recycling mandate to reduce the impact on your rates. We are currently working on what the new government announcement means for Rangitikei, and will keep you informed.

You can read more about the Government's changes to kerbside recycling and foodwaste collection on the Ministry of Environment website.



KEY CONSULTATION TOPIC 1:

As part of Where's Annual Plan & Co @ Rangitikei we are consulting on the Waste Management and Minimisation Plan.

This plan sets out the vision, objectives and goals for managing and minimising waste in Rangitikei. It is a plan that's legally required to be developed and implemented by councils. It also must be reviewed every 6 years. We have recently reviewed our **Waste Management and Minimisation Plan (WMMP)** and have a new, refreshed draft version ready for public consultation.

You can review the **Draft WMMP** and Statement of Proposal in the supplementary materials of this consultation: www.rangitikei.govt.nz/wheres-annualplan-andco

The key questions we are asking in relation to the WMMP are:

1. Do you agree with our vision for waste management and minimisation in the Rangitikei?*

"To maintain a healthy and protected environment for Rangitikei by reducing our impact on the environment"

2. Do you agree with our 2030 targets for reducing waste?*

- Reduce the amount of material entering the waste management system by 10% per person
- Reduce the amount of material that needs final disposal by 30% per person
- Reduce the biogenic methane emissions from waste by at least 30%

KÖRERO MAI

We need to receive your feedback by 5pm on Monday, 5 May 2025



Collective effort to help remove invasive weed from Tutaenui Reservoir

In January 2025, Rangitikei District Council joined forces with Horizons

Regional Council and the Tutaenui Stream Restoration Society to

release Tradescantia Leaf Beetles at the Tutaenui Reservoir, where Tradescantia has been causing issues for a number of years.

Keen gardeners will probably be familiar with Tradescantia, otherwise known as "wandering Jew" or "wandering willie". It's a succulent, brittle weed that originates from South America and is known for its fast growth and thick mats of vegetation, which prevents seedlings from native trees and shrubs from establishing.

Herbicides and pesticides have varying success against Tradescantia, but it does have a natural and more effective predator in the Tradescantia Leaf Beetle, which feeds off the leaves and helps to control it spreading. These beetles are 'host-specific' meaning they don't eat anything other than Tradescantia and some closely related species. So, they're highly effective at controlling the spread of the weed without damaging any other plants.

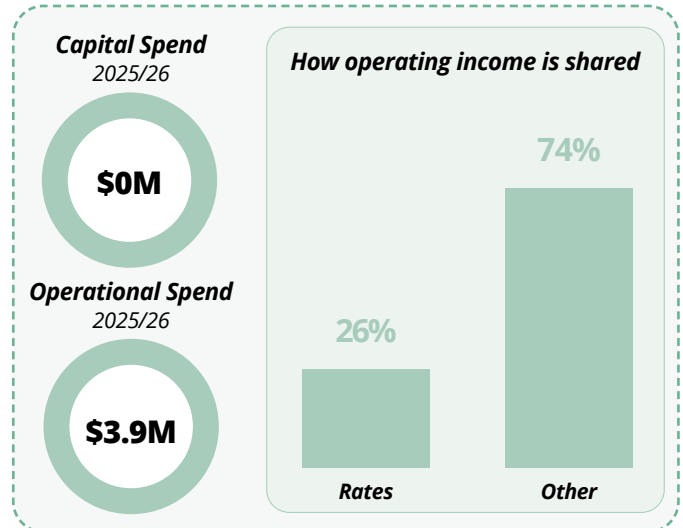
REGULATORY SERVICES

Our regulatory teams handle the day-to-day enforcement of rules and regulations.

They ensure Rangitikei is a safe place to live, people who do business and develop property in our district are compliant, and our beautiful environment is protected and preserved.

They are responsible for things like:

- processing building and resource consent applications.
- registering and inspecting businesses in line with food safety, health and alcohol licensing requirements.
- animal & dog and noise & nuisance control.
- ensuring bylaws are followed.



NOTABLE ACHIEVEMENTS AND WORK IN PROGRESS

(The below includes notable progress to date - 1st July 2024 - 1st March 2025, and next steps).

- The Government is proposing some changes to the **Building Amendment Act** – specifically in relation to earthquake-prone buildings.
 - **Under the previous government**, building owners had 15 years after being issued an earthquake-prone building notice to address the structural integrity of their buildings deemed to be ‘earthquake prone’ (Note, priority buildings such as police, hospitals, schools, and buildings containing emergency operating centres were given 7.5 years to rectify).
 - **Under the current Government**, the remediation deadlines have been extended by 4 years as an interim solution while the Government reviews national legislation for the management of earthquake-prone buildings. An update is expected in May 2025.



KEY CONSULTATION TOPIC 2:

Draft Dangerous, Affected and Insanitary Buildings Policy

As part of our 'Where's Annual Plan & Co @ Rangitikei?' consultation, we are asking for your thoughts on our **Draft Dangerous, Affected and Insanitary Buildings Policy**.

The Building Act 2004 requires Rangitikei District Council to have a policy on dangerous, affected, and insanitary buildings. This Policy provides Council with a means to ensure that dangerous and insanitary buildings are improved to meet building code standards, and that affected buildings do not pose a risk to occupants.

What is a dangerous, affected, and insanitary building?

These are buildings which pose a potential risk to occupants or passers-by due to structural integrity or public health reasons. They are defined depending on their classification. Full definitions can be found in the Building Act 2004 and our Draft Policy.

You can review the **Draft Dangerous, Affected and Insanitary Buildings Policy**, and Statement of Proposal in the supplementary materials of this consultation: www.rangitikei.govt.nz/wheres-annualplan-andco

The key question we are asking in relation to this policy is:

1. **Do you support the Draft Dangerous, Affected and Insanitary Buildings Policy?***

* Please record your answer on the attached submission form.

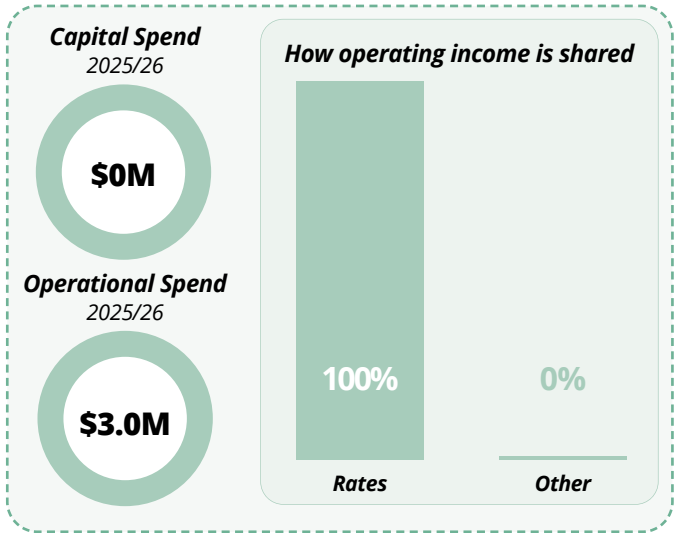
COMMUNITY LEADERSHIP

In a local government context, the Community Leadership workstream refers to Rangitikei District Council's role in guiding, supporting, and representing the Rangitikei community.

NOTABLE ACHIEVEMENTS AND WORK IN PROGRESS

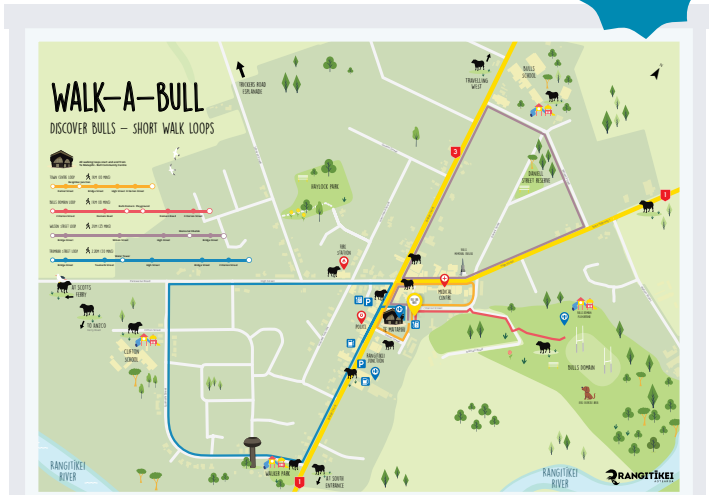
(The below includes notable progress to date - 1st July 2024 - 1st March 2025, and next steps).

- Climate Change Strategy Implementation:**
 We are an active member of the Manawatū-Whanganui Climate Action Committee which is focused on addressing the ongoing implications of climate change.
- Town Centre Placemaking and Wayfinding:**
 - Bulls Wayfinding Map:** With the help of the Bulls community, Council has created a wayfinding map (below) which will soon be found at the Bulls bus stop, EV charging station and playgrounds.
 - Bulls Placemaking:** The old milk bottle rubbish bins have been given a facelift across the town and are now looking Bull-tiful. There is also now a new bull statue in the town centre that has been hiding in a private shed for over a decade.
 - Taihape Wayfinding Map:** We are currently in the development phase of a wayfinding map for Taihape.
 - Taihape Placemaking:** Keep an eye out for a new picnic and covered area about to be established at the gumboot throwing arena. This hopes to encourage more people to stop and spend in the Taihape town centre.
 - Marton Streetscape Upgrade:** This project is centered around enhancing the natural beauty of Marton. We have held user group, and stakeholder events to ensure the Marton Town Centre streetscape reflects the needs and desires of the Marton Community. We are now in the final stages of developing the streetscape plan and should be in a position to consult with you in this financial year (2025-26).
- Smokefree and vapefree policy adopted – August 2024:**
 All Rangitikei District Council buildings, parks, and reserves are now smokefree and vapefree.



What is placemaking and wayfinding?

In the context of town centres, 'placemaking' ensures town are functional, engaging, and ultimately reflective of community culture and identity - the stuff that makes you feel like you're at home. 'Wayfinding' focuses on making sure the town functionally flows and is easy to navigate.



- **District Plan Review:**
Council has commenced its review of the Rangitikei District Plan. It will be completed section by section rather than all at once.
 - **Urban Plan Change:** Work is well underway on the Urban part of the District Plan review which focuses on the Residential and Rural Lifestyle Zones of the District Plan. As part of the Urban Plan Change, we are proposing to rezone some land to make way for future urban development and growth. We are hoping to engage with the community shortly, and complete this part of the District Plan Review in the second half of 2025.
- **Economic Development Strategy:**
This strategy will be a guiding document for commercial growth and business development throughout Rangitikei.
- **Local Election 2025:**
In October, we will hold the triennial Local Government Election – more information, including information for those wishing to stand for election to Rangitikei District Council can be found on our website:
www.rangitikei.govt.nz/whereslocalelections.



What is a District Plan?



To put it simply, The District Plan facilitates growth and development of Rangitikei towns and villages. It's used to ensure that land use is suitable for certain activities and industries by creating zones where only certain things are permitted. This can include the type of buildings that are built, what industry is allowed to operate in the area, and conditions for development (i.e. building heights and sizes).



KEY CONSULTATION TOPIC 3:

As part of 'Where's Annual Plan & Co @ Rangitikei', we are consulting on the following changes to Rangitikei District Council's schedule of fees and charges. If accepted, these fees and charges would be implemented from 1 July 2025.

Rates vs fees and charges – what's the difference?

When setting how much things cost, Rangitikei District Council must balance how much of the service is a public good (i.e. delivers benefits to the whole of Rangitikei, such as parks and reserves), and how much of this service provides a private benefit (i.e. hiring a room in a Council-owned community hub for a private meeting).

The public good portion of all Council-provided services is paid for by ratepayers through rates. The private benefit portion is paid for by the person receiving the service through Council's fees and charges. Rangitikei District Council reviews its schedule of fees and charges annually and proposes changes in line with inflation. Sometimes we also need to change fees and charges outside of inflation. This is to ensure we continue to cover the cost of providing a particular service.

The proposed fees and charges can be viewed in the **Draft Schedule of Fees and Charges 2025/26**, and Statement of Proposal. You can find both of these in the supplementary materials of this consultation:
www.rangitikei.govt.nz/wheres-annual-plan-andco

The key question we are asking in relation to Fees and Charges is:

1. **Are there any fees/charges you think should be changed?***
i.e. Do you think there are any charges that should be increased or decreased.

* Please record your answer on the attached submission form.



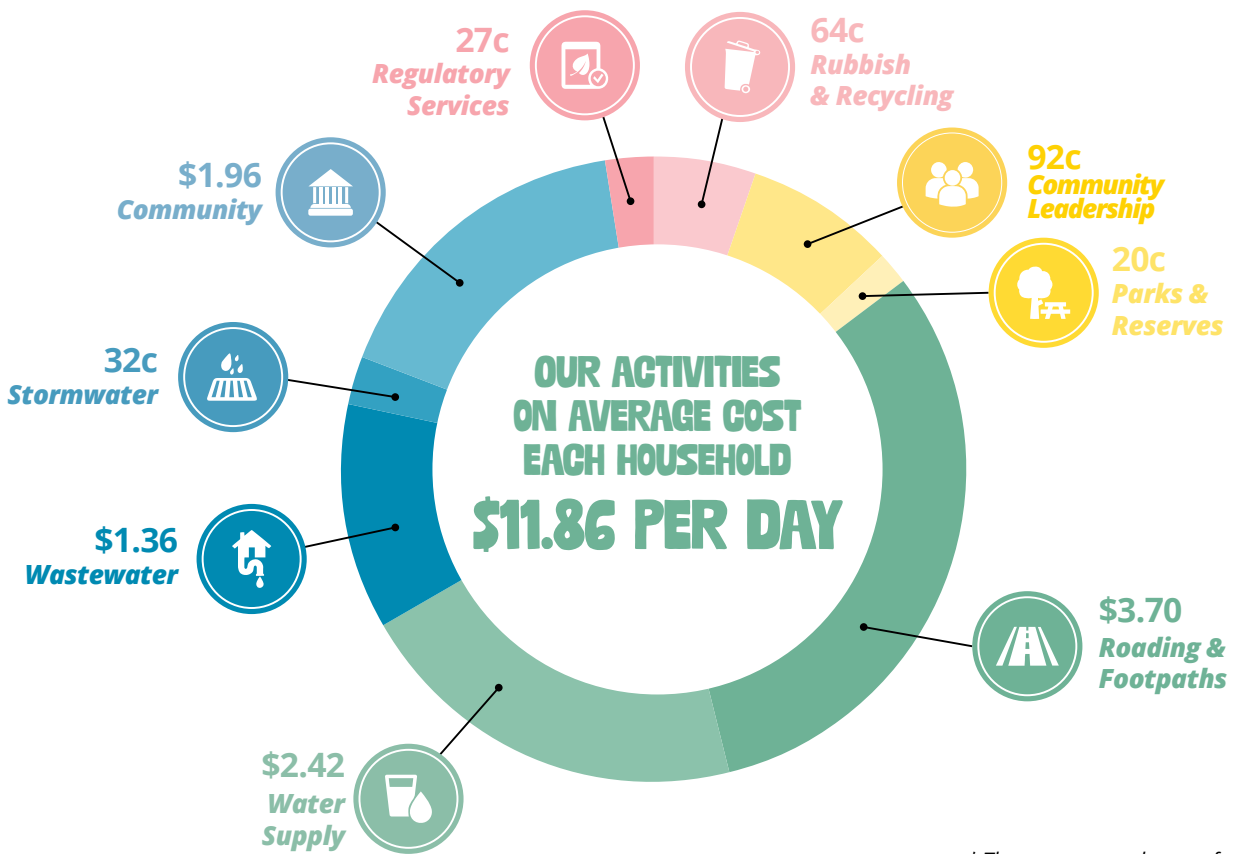
WHAT WILL YOUR 2025/26 RATES BILL LOOK LIKE?

Ka ahatia tō pire rēti i ngā tau 2025/26?

Every year, Rangitikei District Council collects rates from Rangitikei property owners to cover the cost of delivering core services, pay down some of our debt, and prepare for future investment in our infrastructure and assets (i.e. upgrades and renewals).

The below is an average daily breakdown of how much the average Rangitikei ratepayer will pay towards each core Council workstream in the 2025/26 financial year:

Daily rates breakdown*



* The average per-day cost for Rangitikei ratepayers in the 2025/26 financial year.

As part of the Long Term Plan 2024-34, Rangitikei District Council set a rates limit to eliminate the impact of our deficit budget over five years. Council's initial proposed rate increase for 2025/26 was 9.9%.

We have since found some efficiencies and have been able to reduce this rates increase to 9.1%.

The table below shows the total rates increases (excluding penalties and remissions) for the next 10 years based on the Long Term Plan 2024-34. These are the proposed total increases across the District and will vary from property to property. This variation across Rangitikei is estimated and captured in the following pages.

	Y1	Y2	Y3	Y4	Y5	Y6	Y7	Y8	Y9	Y10
Initial increase in Council's Rates Income	12.5%	9.1%	9.9%	9.9%	8.75%	8.5%	6.5%	6.5%	6.5%	6.5%

PROPOSED ANNUAL RATES 2025/2026

How we determine what you get charged, and how rates differ across Rangitikei?

The Rangitikei is home to approximately 8,000 rateable properties. The amount of money we need to deliver our services and facilities (or our 'operational spend/opex') is divided between these properties.

However, the final dollar amount you receive on your rates bill might be different from your neighbour - or different if you live in Marton, versus if you live in Taihape. This is because the amount of rates charged is different for each property and dependent on things like:

- The value of your property and whether that value has changed from year to year (i.e. due to a new extension on your house, or a renovated bathroom).
- What services the property owners/occupiers receive or are likely to benefit from (i.e. you might have a septic tank on your property whereas your neighbour does not. This would mean your neighbour would pay for wastewater on their rates bill, but you wouldn't).

The following steps through the average value of property types across the Rangitikei district. It outlines what your rates for the 2025/26 financial year are likely to be based on the type of property you own, and where in Rangitikei it is situated.



RESIDENTIAL TAIHAPE

Average Property Valuation	Proposed Average Rate:		Current Annual Rate:			Average Increase:
\$326,568.61	\$3,842.96		\$3,542.73			\$5.77 per week
	Property Valuation	Current Rate	Proposed Rate	Increase per week	% Increase	8.47% per week
High (Approx. 25 % above average value)	\$410,000.00	\$3,944.71	\$4,276.35	\$6.38	8.41%	
Medium (nearest to average value)	\$325,000.00	\$3,751.52	\$4,069.89	\$6.12	8.49%	
Low (Approx. 25 % below average value)	\$245,000.00	\$3,569.70	\$3,875.57	\$5.88	8.57%	



RESIDENTIAL MARTON

Average Property Valuation	Proposed Average Rate:		Current Annual Rate:			Average Increase:
\$415,285.28	\$4,175.80		\$3,834.01			\$6.57 per week
	Property Valuation	Current Rate	Proposed Rate	Increase per week	% Increase	8.91% per week
High (Approx. 25 % above average value)	\$520,000.00	\$4,142.54	\$4,508.85	\$7.04	8.84%	
Medium (nearest to average value)	\$415,000.00	\$3,903.89	\$4,253.81	\$6.73	8.96%	
Low (Approx. 25 % below average value)	\$310,000.00	\$3,665.25	\$3,998.76	\$6.41	9.10%	



RESIDENTIAL BULLS

Average Property Valuation	Proposed Average Rate:		Current Annual Rate:			Average Increase:
\$493,167.01	\$4,338.97		\$3,987.00			\$6.77 per week
	Property Valuation	Current Rate	Proposed Rate	Increase per week	% Increase	8.83% per week
High (Approx. 25 % above average value)	\$610,000.00	\$4,347.09	\$4,727.46	\$7.31	8.75%	
Medium (nearest to average value)	\$485,000.00	\$4,062.99	\$4,423.84	\$6.94	8.88%	
Low (Approx. 25 % below average value)	\$365,000.00	\$3,850.45	\$4,188.57	\$6.50	8.78%	

* The calculations reflect the average across our sample properties in each of these towns, including the average valuation, rates increase and actual rates. We have included these rateable property types as an example.



RURAL (ALL)

Average Property Valuation	Proposed Average Rate:		Current Annual Rate:		
\$2,154,267.36	\$6,718.12		\$6,235.48		
	New Property Valuation	Current Rate	Proposed Rate	Increase per week	% Increase
High (Approx. 25 % above average value)	\$2,690,000.00	\$7,356.60	\$7,908.18	\$10.61	7.50%
Medium (nearest to average value)	\$2,150,000.00	\$6,077.11	\$6,561.83	\$9.32	7.98%
Low (Approx. 25 % below average value)	\$1,610,000.00	\$4,849.80	\$5,250.17	\$7.70	8.26%

Average Increase:

\$9.28
per week

7.74%
per week



RURAL (GREATER THAN \$1M)

Average Property Valuation	Proposed Average Rate:		Current Annual Rate:		
\$4,106,405.58	\$11,838.99		\$11,007.37		
	Property Valuation	Current Rate	Proposed Rate	Increase per week	% Increase
High (Approx. 25 % above average value)	\$5,130,000.00	\$14,092.82	\$15,174.42	\$20.80	7.67%
Medium (nearest to average value)	\$4,100,000.00	\$10,509.06	\$11,298.38	\$15.18	7.51%
Low (Approx. 25 % below average value)	\$3,080,000.00	\$8,242.99	\$8,855.49	\$11.78	7.43%

Average Increase:

\$15.99
per week

7.56%
per week



RURAL (LESS THAN \$1M)

Average Property Valuation	Proposed Average Rate:		Current Annual Rate:		
\$536,634.16	\$2,477.74		\$2,283.81		
	Property Valuation	Current Rate	Proposed Rate	Increase per week	% Increase
High (Approx. 25 % above average value)	\$670,000.00	\$2,713.37	\$2,966.91	\$4.88	9.34%
Medium (nearest to average value)	\$535,000.00	\$2,458.72	\$2,673.69	\$4.13	8.74%
Low (Approx. 25 % below average value)	\$402,000.00	\$2,156.44	\$2,350.63	\$3.73	9.01%

Average Increase:

\$3.73
per week

8.49%
per week



COMMERCIAL

Average Property Valuation	Proposed Average Rate:		Current Annual Rate:		
\$303,376.19	\$4,475.80		\$4076.00		
	Property Valuation	Current Rate	Proposed Rate	Increase per week	% Increase
High (Approx. 25 % above average value)	\$570,000.00	\$4,350.18	\$4,718.08	\$7.07	8.46%
Medium (nearest to average value)	\$435,000.00	\$4,357.40	\$4,776.98	\$8.07	9.63%
Low (Approx. 25 % below average value)	\$335,000.00	\$3,777.31	\$4,111.08	\$6.42	8.84%

Average Increase:

\$7.69
per week

9.81%
per week



UTILITIES

Average Property Valuation	Proposed Average Rate:		Current Annual Rate:		
\$3,641,067.80	\$11,756.36		\$11,122.78		
	Property Valuation	Current Rate	Proposed Rate	Increase per week	% Increase
High (Approx. 25 % above average value)	\$4,357,000.00	\$118,179.80	\$123,989.03	\$111.72	4.92%
Medium (nearest to average value)	\$3,412,000.00	\$92,805.74	\$97,387.28	\$88.11	4.94%
Low (Approx. 25 % below average value)	\$2,246,000.00	\$61,497.63	\$64,564.38	\$58.98	4.99%

Average Increase:

\$12.18
per week

5.70%
per week

YOUR DECISION MAKERS - ELECTED MEMBERS

Ngā Kaikaunihera

This is your Council. You've elected representatives from across the Rangitikei District to work alongside our community as we move towards making this place home.

We want to hear from you throughout this process. Get in touch with a Councillor from your ward if you would like to have a chat about this document, or any other Council related projects.



Mayor Andy Watson
06 327 7615 / 027 617 7668
andy.watson@rangitikei.govt.nz



Deputy Mayor Dave Wilson ●
027 223 4279
dave.wilson@rangitikei.govt.nz



Councillor Fiona (Fi) Dalgety ●
021 222 8460
fi.dalgety@rangitikei.govt.nz



Councillor Richard Lambert ●
06 322 8096 / 027 879 2221
richard.lambert@rangitikei.govt.nz



Councillor Simon Loudon ●
021 357 727
simon.loudon@rangitikei.govt.nz



Councillor Greg Maughan ●
027 472 2986
greg.maughan@rangitikei.govt.nz



Councillor Gill Duncan ●
06 388 1409 / 027 255 1409
gill.duncan@rangitikei.govt.nz



Councillor Jeff Wong ●
021 170 7637
jeff.wong@rangitikei.govt.nz



Councillor Paul Sharland ●
027 450 3056
paul.sharland@rangitikei.govt.nz



Councillor Brian Carter ●
027 247 1812
brian.carter@rangitikei.govt.nz



Councillor Coral Raukawa ■
0204 004 7087
coral.raukawa@rangitikei.govt.nz



Councillor Piki Te Ora Hiroa ■
021 0275 9983
pikiteora.hiroa@rangitikei.govt.nz

- Central Ward
- Northern Ward
- Southern Ward
- Tiikeitia ki Tai (Coastal) Ward
- Tiikeitia ki Uta (Inland) Ward

Scan the QR Code to read more about our Councillors →



CONSULTATION MILESTONES

Ngā Kōrero Whakahiato

WHAT HAPPENS NEXT?



CONSULTATION OPEN

Friday 4th April 2025

This is your opportunity to provide feedback for Council to consider.



CONSULTATION CLOSED

5pm Monday 5th May 2025

Please provide feedback before this date to ensure it is considered.



HEARINGS

Thursday 15th May 2025

You will be given the opportunity to speak to Elected Members directly about your feedback (If you would like this opportunity, please note this on your submission form).



DELIBERATIONS AND DECISION

Thursday 5th June 2025

This is where Elected Members consider all feedback provided during consultation and discuss whether any changes need to be made to the proposed documents before they are adopted and put into action.



ADOPTION

By 30 June 2025

Everything we are consulting on: The Annual Plan 2025/26, Fees and Charges, the Draft Waste Management and Minimisation Plan, and the Draft Dangerous, Affected and Insanitary Buildings Policy will be adopted by Council before the new financial year.

NEED MORE INFORMATION?

To find more information on any part of this process, or this document, you can:



Visit our website

www.rangitikei.govt.nz/wheres-annualplan-andco



Contact our Council staff by calling

0800 422 522 or contact one of our Councillors



Email us at info@rangitikei.govt.nz

KŌRERO MAI

We need to receive your feedback by 5pm on Monday, 5 May 2025





WHERE'S IT @ RANGITIKEI

Tirohanga Whakamua
Look to the future

info@rangitikei.govt.nz
www.rangitikei.govt.nz