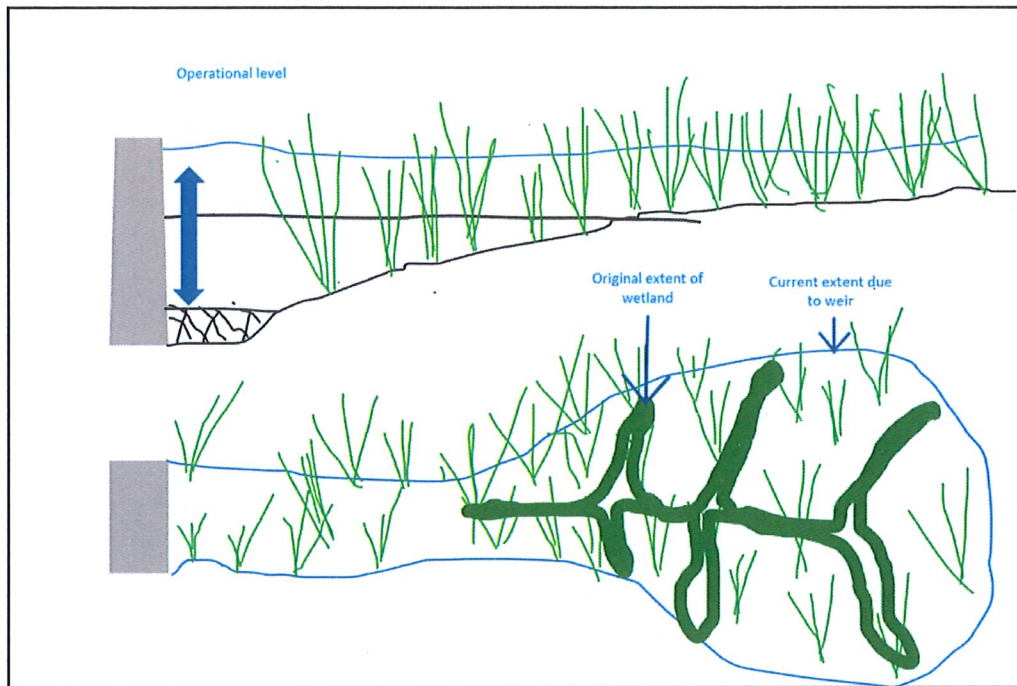


## Erewhon Rural Water Supply Scheme



### Current Consent

- The current resource consent expires on 1 July 2027.
- Application needs to be submitted prior to 1 January 2027
- The current consent authorises a maximum of 1,800m<sup>3</sup>/day for stock water.

### The Site

Abstraction point Reporoa Stream which is located within the Pukeokahu – Mangaweka (Rang – 2b) water subzone and middle Rangitikei Water Management Zone.

Horizons have identified the wetland as a priority “A” bog wetland which is a threatened habitat. The basis of our position should be that the weir and therefore the irrigation activity has significantly increased the extent of the wetland and contributes to the health of the wetland.

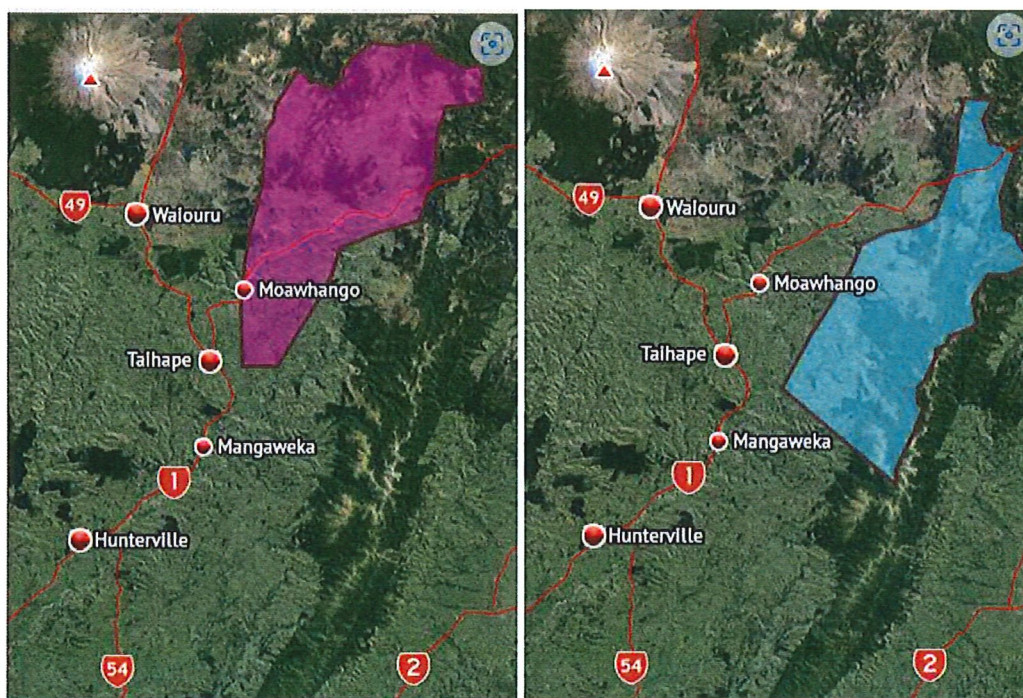
After the weir an ephemeral waterway drops steeply into the Rangitikei River. Therefore the waterway would not naturally hold water during low flow conditions nor will it contribute to low flows in the Rangitikei River. A Hydrologist may be required to demonstrate this as we don't want a low flow restriction or base flow requirements placed on the consent.

### Required consultation

- Wanganui Conservancy of the Department of Conservation
- Wellington Fish and game
- Ngāti Whitikaupeka
- Ngāti Te Ohuake
- Aorangi Awarua Trust
- Taumata Arowai (potable water)

### Iwi with Interest

Ngati Whitikaupeka and Ngati Te Ohuake have interests in this area, We will have to engage with these iwi as part of the consenting process.



Ngati Whitikaupeka

Ngati Te Ohuake

### National Policy Statement and National Environmental Standards for Freshwater

The NPS for freshwater states: *The loss of extent of natural inland wetlands is avoided, their values are protected, and their restoration is promoted.*

This is reflected in the Resource Management (National Environmental Standards for Freshwater) Regulations 2020 Which states: *The taking, using, damming, diversion or discharge of water outside, but within a 100m setback from, a natural wetland is a **non complying** activity under clause 52 of the NES -FW)*

### One Plan

The One Plan is currently under review and is scheduled to be replaced by 1 January 2026. If this eventuates a new assessment will be required.

Horizons has identified Repora bog as a priority "A" bog wetland, Schedule f goes on to state that bog wetlands are threatened habitats.

Therefore are no minimum flow limits on the Repora bog but as it drains into the Rangitikei River Horizons will use these low flow limits. Given that it is important for this scheme to abstract water during low flow conditions the activity will be a **non complying** activity under rule 16-8 of the One Plan.

### Non Complying Activities

The non complying activity status does not prevent the abstraction from occurring. It just means that we need to demonstrate that on balance the activity has net benefits.

## Existing Consent

One of the main condition that we will need to review is condition 10.

10. *By 1 May 2011, the Permit Holder shall undertake at least ten gaugings, at least seven days apart, within 500 metres upstream of the weir used for abstracting water under this Permit, when the flow at the Rangitikei at Pukeokahu flow recorder is less than 8.7 cubic metres per second (8.7 m<sup>3</sup>/s), with at least five of these measurements taken when the flow is less than 5.3 m<sup>3</sup>/s at the Rangitikei at Pukeokahu flow recorder. The results of these gaugings shall be submitted to the Manawatu1Wanganui Regional Council's Environmental Protection Manager by 31 May 2011.*

## Potable Water

Taumata Arowai will require the scheme to be registered before **1 November 2025** if the water is used for human consumption.

Acceptable solution end point treatment , cartridge filtration and UV disinfection  
Maintenance and inspections will be re

## Recommended steps:

- Site visit completed
- Map the current extent of the wetland
- Overlay the original extent of the wetland
- Start monitoring the water level behind the weir
- Levels taken between the natural outlet of the wetland and the top of the water level behind the weir.
- Get the health of the wetland assessed and provide recommendations on the following:
  - Impact of wetland periodically drying up during the year (natural regime)
  - Potential improvements, fencing, removing of exotics(don't do until after the consent process)
  - Health of the wetland and hydraulic requirements
- Engage with iwi.
- Procure a Hydrogeologist to complete a catchment assessment.
- Engage with the Department of conservation
- Complete reasonable use requirements assessment
- Complete a full compliance assessment
- Confirm if the current water limits are adequate
- Contact Taumata Arowai
- Look to undertake some gauging during low flow conditions especially if the gauging under condition 10 did not occur.